

NOTTINGHAM ANALOGUE
INTERSPACE JUNIOR
SET UP INSTRUCTIONS



CONGRATULATIONS ON PURCHASING YOUR NOTTINGHAM ANALOGUE TURNTABLE.

WE RECOMMEND THESE INSTRUCTIONS BE READ AT LEAST ONCE BEFORE SETUP

WITH CARE UNPACK THE COMPLETE CONTENTS OF BOX AND MAKE SURE ALL ITEMS ARE PRESENT AS PER CHECK LIST ATTACHED.

SET UP AND ASSEMBLY

BEFORE STARTING SETUP, CHECK THE SURFACE YOU INTEND TO USE IS LEVEL AND STRONG ENOUGH TO TAKE WEIGHT OF TURNTABLE.

STEP 1:- POSITION BASE PLINTH ONTO YOUR CHOICE OF FLAT SURFACE. LEVEL AS REQUIRED USING THE FOUR ADJUSTABLE FEET. A SPIRIT LEVEL IS PROVIDED. (PHOTO 1)

STEP 2:- MOTOR SETUP GENTLY PRESS THE PULLEY ONTO MOTOR SPINDLE. PUSH ON CENTRALLY. NOT AT AN ANGLE. YOU WILL FIND IT USEFUL TO SUPPORT THE UNDERSIDE OF MOTOR WHILST DOING THIS. (PHOTO 2)

STEP 3:- POUR APPROX ½ A CAP (0.5ml) OF OIL INTO BEARING WELL. THE PIPETTE SUPPLIED CAN BE USED FOR EASE OF APPLICATION. (PHOTO 3)

STEP 4:- LOWER PLATTER ASSEMBLY INTO BEARING WELL AND ALLOW TO SETTLE. (PHOTO 4)

STEP 5:- ARM SET UP. REFER TO THE INSTRUCTIONS ENCLOSED WITH THE TONE ARM.

ADDITIONAL ARM INFORMATION FOR YOUR TURNTABLE, WE HAVE INCLUDED TWO SMALL FOAM WEDGES. THESE CAN BE USED TO PREVENT THE PLATTER FROM MOVING DURING TONE ARM SETUP. SIMPLY RAISE THE PLATTER SLIGHTLY OUT OF THE BEARING, INSERT THE WEDGES IN THE GAP, LOWER PLATTER ONTO WEDGES AND COMPLETE ARM SETUP. (MAKE SURE PLATTER IS SETTLED IN BEARING BEFORE COMPLETING ARM SETUP.) REMOVE FOAM WEDGES AFTER ARM SETUP AND RETAIN FOR FUTURE USE. (PHOTO 5)

STEP 6:- PUT THE TWO DAMPING RINGS AROUND THE TOP TWO GROOVES OF THE PLATTER. ADD THE DRIVE BELT AND ALIGN THE DRIVE BELT GROOVES OF THE PULLEY WITH THOSE OF THE PLATTER. THE MOTOR UNIT SLIDES UP AND DOWN WITHIN THE BASE PLINTH TO ALLOW FOR THIS. **DO NOT PRESS ON PULLEY TO MAKE THESE ADJUSTMENS ONLY USE THE OUTER OF THE MOTOR UNIT AS MOTOR SPINDLE DAMAGE MAY OCCUR.**

DRIVE BELT TOP GROOVE 45RPM LOWER 33.3RPM (PHOTO 6)

STEP 7:- CONNECT THE MOTOR TO THE ELECTRIC SUPPLY. YOU WILL FEEL A SLIGHT VIBRATION THROUGH THE PULLEY, THIS IS NORMAL. TO START YOUR TURNTABLE PUSH THE PLATTER CLOCKWISE WITH YOUR HAND, IF PUSHED TOO GENTLY THE PLATTER WILL NOT MAINTAIN SPEED, IF PUSHED TOO HARD THE PLATTER WILL ADJUST TO THE CORRECT SPEED IN A FEW SECONDS. TO STOP PLATTER GENTLY PLACE HAND ON THE SIDE OF PLATTER.

YOU SHOULD NOW BE READY TO ENJOY MANY HAPPY HOURS OF LISTENING TO YOUR RECORDS.

CARE AND MAINTENANCE OF YOUR SPACEDECK TURNTABLE

- DURING THE FIRST HOURS OF RUNNING, YOUR SPINDLE AND BEARING WILL BED IN
- WE RECOMMEND AN OIL CHANGE EVERY 2 YEARS. SIMPLY LIFT PLATTER FROM BEARING CLEAN OIL OFF SPINDLE. USE TISSUE PAPER TO REMOVE OLD OIL FROM BEARING. THEN REPEAT STEPS 3 AND 4
- PERIODICALLY WASH THE DRIVE BELT AND DAMPING RINGS. USE WARM SOAPY WATER AND AIR DRY.
- LINT FREE CLOTH IS BEST FOR CLEANING YOUR TURNTABLE. AVOID USING POLISH. A SIMPLE DUST IS BEST. YOU MAY WISH TO COVER YOUR TURNTABLE WITH A PIECE OF MATERIAL WHEN NOT IN USE.
- TURNTABLE MOTOR CAN BE LEFT SWITCHED ON WHEN NOT IN USE, HOWEVER, DO NOT LEAVE PLATTER SPINNING CONTINUALLY WHEN NOT IN USE.
- REPLACE DUST COVER BACK ON PLATTER WHEN NOT IN USE.
- CLEAN THE STYLUS BACK TO FRONT WITH METHYLATED SPIRITS AND SMALL BRUSH.
- SHOULD YOU WISH TO EARTH THE BEARING OF YOUR TURNTABLE, PROVISION FOR A 4ML CONNECTOR IS AVAILABLE TO THE REAR OF ALUMINIUM BEARING HOUSING (CONNECTOR AND LEAD NOT SUPPLIED)

ANY QUESTIONS CONTACT YOUR NOTTINGHAM ANALOGUE DEALER.

MOTOR ARMMOUNT COLLET



PHOTO 1

ADJUSTABLE FEET X4



PHOTO 2

PULLEY PUSH ON CENTRALLY

OIL ½ CAP (0.5ml)

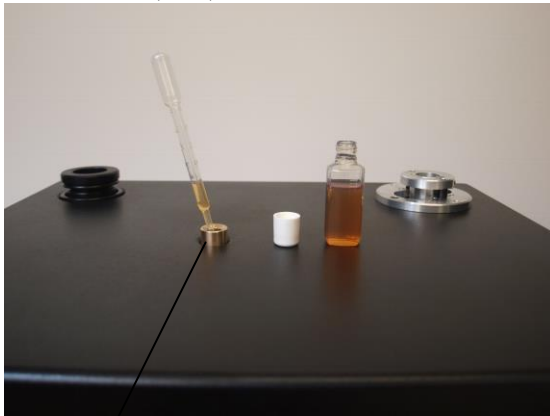


PHOTO 3

BEARING WELL



PHOTO 4

LOWER SPINDLE INTO BEARING

2 X FOAM WEDGES



PHOTO 5

2 X DAMPING RINGS

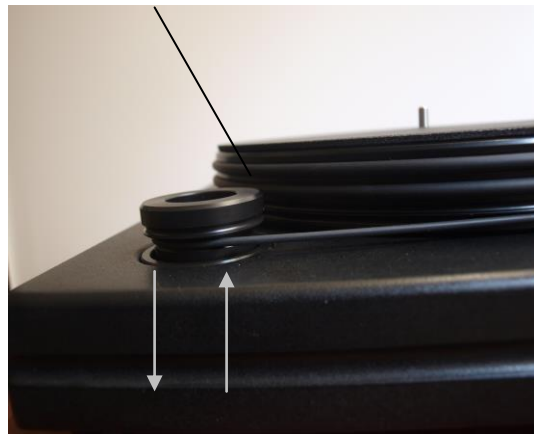


PHOTO 6

ALIGN PULLEY GROOVES



PHOTO 7