



The distributed electric energy is continually tormented from numerous troubles that in varied ways they have the tendency to reduce the performances of the quality audio of the hi-fi system introducing extraneous and dangerous signals.

The troubles that race on the electric line are manifold and of different nature, they actually go from the notorious holes of voltage to real continuous and impulsive noises produced by apparatuses that they are commonly used in the house: halogen lamps, switching power supply, computers, domestic Boiler etc.

With the insertion in your hi-fi system of LEDISON-230 you will resolve big part of the tied up problems to the electric energy.

The Edison-230 filters reduces impulsive noises, it distributes the energy as same potential at constant times (thanks to the wiring of *equi-power* star circuits) the troubles of electric net are really reduced (you can see the two graphs related to the LEDISON 230).

The construction of our products respects all the safety rules and adopt the necessary precautions for improve the hi-voltage ac mains insulation .

The double isolation of the parts submitted to voltage through plates of insulating material of well 5 mm of thickness, electronic protection breaker is resettable by simple press a push button, the contacts and electric terminals are isolated from insulating with hi-grade temperature material, filters have double resin insulation.

The AC-output female plug has isolation plug type IP-44 for 10 ampere with mechanical cover that is closes if not used.

The two blue marking ac output plugs are recommended to connect low power units: preamplifiers , c d player, DAC etc the six black ac output plug, can be used for amplifier, power amplifier etc. , but you can use also too for low power product if preferred than the blue.

The used double filters are separate for the two groups of electric ac mains, they use two different conceptions of project: for the blue marking it's recommend low power units due the design it's for hi-slope filters, black marked ac output plug have sweet slope filter and hi-energy current as adopted technology of parallel-shunt filters.

To subsequently double filters reduce possible troubles caused from "surge" or woodpeckers and holes of voltage, the front panel gas light operates into both circuits and reduce common mode noise.

The ac mains female output plug are IP-44 as double isolation and they accept the SCHUKO plug and other European plugs.

LEdison-230 take input energy from a IEC hi current plug, 16amp 250 Volts UL94-V0, come supply with ac mains cable as OFC 2 x 2.5 mm as long two meters.

## Electric performances

**POWER OUTPUT : 1.5 Kw total power**

**OUTPUT AC MAINS PLUGS: Total of 8 as 2 low power,6 hi-power**

**INTERNAL AC FILTER : Double section for low/hi power**

**LOW POWER FILTER (plug nr.2) : Double coil/capacitors filter 50-400Hz**

**HI POWER FILTER (plug nr.6): Shunt capacitors network MKT**

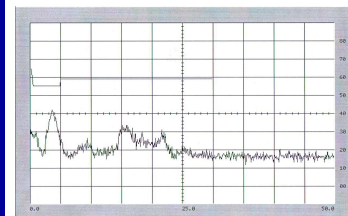
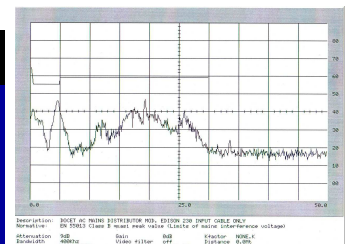
**INPUT AC RECEPTABLE : IEC 16 AMP professional**

**PROTECTION : Auto resettable protection circuit breakers**

**INTERNAL LAYOUT : Star *equi-power* layout circuits**

**OVERALL DIMENSION/WEIGHT : 200 (L) 85 (H) 300 (P) mm / KG.6**

**CERTIFICATIONS : CE-EMC / CE-LVD / IEC-65**



DOCET - LECTOR Via Verdi,35  
telefono : 0382.484165  
E-mail: info@docet-lector.com

I-27010 Albuzzano (PV)  
fax : 0382.481021  
Web: www.docet-lector.com