

# SERIES IV

MAGNESIUM TONE-ARM

The Series IV precision pick-up arm owes much to the technology developed for the acclaimed Series V.

Although presented at a lower price it retains the unique one-piece magnesium tone-arm, dual-lock base and other advanced features listed overleaf.

The Series IV is a worthy relative of 'the best pick-up arm in the world' with a sonic performance reflecting the care and attention to detail underlying its design and manufacture.



# SME

*The best pick-up arm in the world*



# SERIES IV

## MAGNESIUM TONE-ARM

- ☆ Unique one-piece pressure die-cast tone-arm utilising the advantages of magnesium, replaces conventional fabricated construction.
- ☆ Internal constrained layer damps minute residual vibration leaving the tone-arm acoustically inert.
- ☆ Fine machined cartridge platform, enamel free to avoid interface resonance.
- ☆ Stainless steel cross shaft, ground and thread ground. Carried in massive yoke on 10mm ABEC 3 ball races. Axis at record mean level to minimise warp-wow.
- ☆ Unique assembly gives high rigidity and allows bearings to be critically adjusted before tone-arm is fitted.
- ☆ Stainless steel vertical shaft, ground and thread ground, with integral 16mm diameter flange to couple shaft and yoke.
- ☆ 23mm diameter steel pillar, heat treated, ground and honed, carries two 17mm ABEC 3 ball races, widely spaced to resist tilt.
- ☆ Anti-skate control operates through tension spring and filament. Dial corresponds with VTF and has positive OFF position.
- ☆ Lowering/raising control gives smooth positive action. Height of lift can be adjusted.
- ☆ Dual-lock base provides movement control with high rigidity.
- ☆ Tungsten-alloy balance weight carried on damped two-point suspension. Extra-low inertia design assists warp riding.
- ☆ Underslung weight housing corrects centre of gravity and provides non-reflective tone-arm termination. Adjustment leadscrew journaled in twin ball races with lever clamping.
- ☆ Swivelling, damped output-socket minimises vibration transmission in sub-chassis use.
- ☆ Reference lines on tone-arm facilitate VTA setting.
- ☆ Fine adjustment of horizontal tracking angle (HTA).
- ☆ New design alignment protractor sets HTA with great accuracy.

# SME

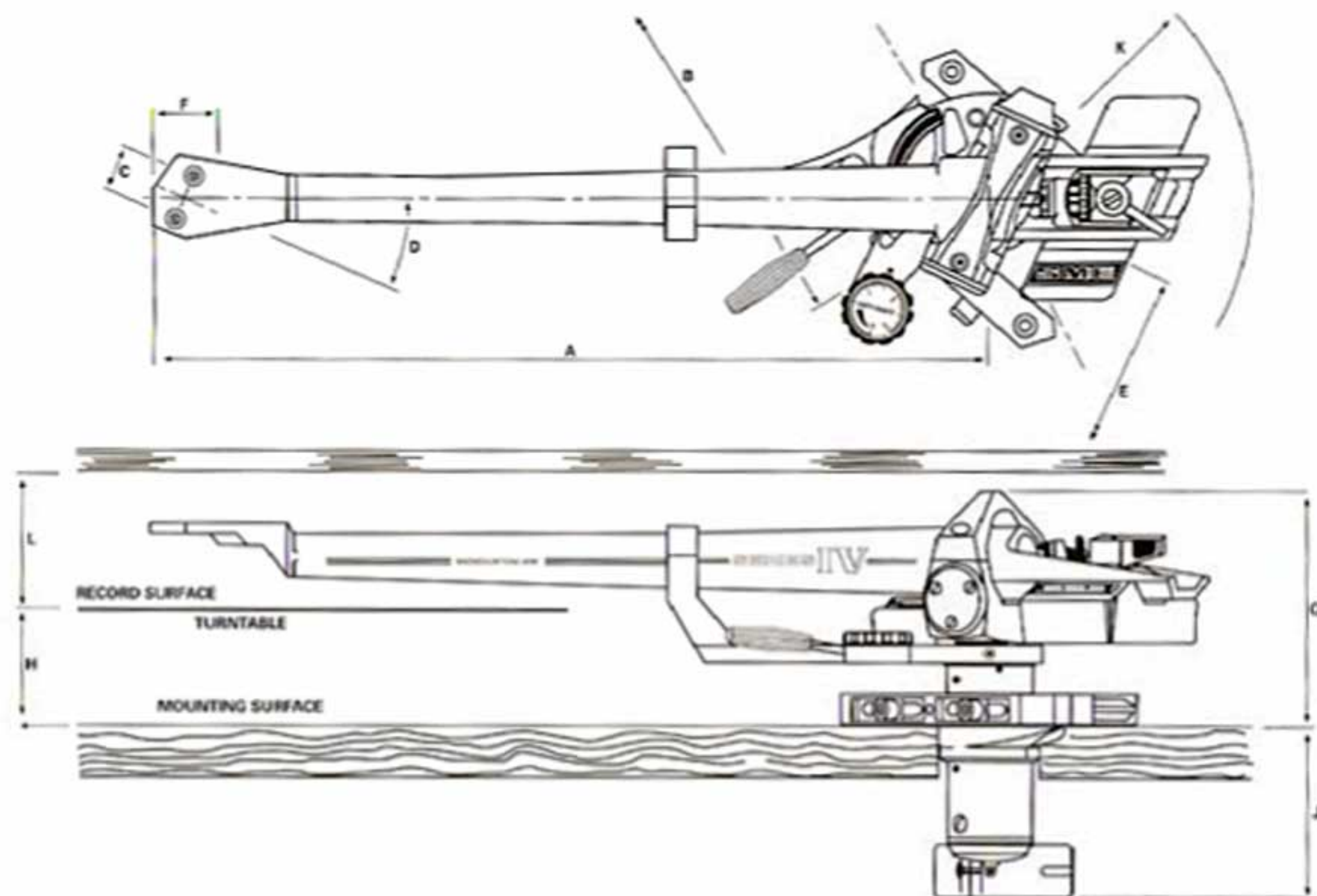
*The best pick-up arm in the world*

The Series IV precision pick-up arm is available in the UK from leading audio stockists only.

Distribution overseas is made by appointed agents in the countries concerned. Please contact our Sales Department for further information.

SME LIMITED • STEYNING • SUSSEX • BN44 3GY • ENGLAND

☎ +44 (0)1903 814321 • ☎ +44 (0)1903 814269



### Dimensions

	mm
A - Distance from pivot to stylus	233,15
B - Distance from pivot to turntable centre	215,35
C - Cartridge fixing centres	12,70
D - Offset angle	23,635°
E - Linear offset	93,47
F - Overhang	17,80
G - Height above mounting surface	{ max 87,90 min 56,40
H - Height of record surface above mounting surface	{ max 57,90 min 26,40
J - Depth below mounting surface	56,75
K - Radial clearance for balance weight	73,0
L - Clearance between cabinet lid and record surface, assuming cartridge height at 17,0	35,0

### Specification

Effective mass	10/11g
Cartridge balance range	5-16g
Vertical tracking force (at min cartridge weight)	0-3g
Maximum tracking error	0.012°mm
Null points:	
Inner	66,04mm
Outer	120,9mm
Audio lead:	
Length	1,2m
Capacitance	≈ 140 pF/channel
Resistance	≈ 0.145 ohms/conductor
Internal wiring:	
Capacitance	≈ 15 pF/channel
Resistance	≈ 0.535 ohms/conductor
Output plug and socket	D.I.N. 5-pole 240°
Weight, net	700.0g